

ARF5 Polyclonal Antibody
Purified Rabbit Polyclonal Antibody (Pab)
Catalog # AP54868**Specification**

ARF5 Polyclonal Antibody - Product Information

Application	WB, IHC-P, IHC-F, IF, ICC, E
Primary Accession	P84085
Reactivity	Rat, Bovine
Host	Rabbit
Clonality	Polyclonal
Calculated MW	20 KDa
Physical State	Liquid
Immunogen	KLH conjugated synthetic peptide derived from human ARF5
Epitope Specificity	15-120/180
Isotype	IgG
Purity	
affinity purified by Protein A	
Buffer	0.01M TBS (pH7.4) with 1% BSA, 0.02% Proclin300 and 50% Glycerol.
SUBCELLULAR LOCATION	Golgi apparatus. Cytoplasm > perinuclear region.
SIMILARITY	Belongs to the small GTPase superfamily. Arf family.
SUBUNIT	Binds ASAP2. Interacts with NCS1/FREQ at the Golgi complex. Interacts with RAB11FIP3 and RAB11FIP4.
Important Note	This product as supplied is intended for research use only, not for use in human, therapeutic or diagnostic applications.

Background Descriptions

The ADP-ribosylation factor (ARF) protein family are structurally and functionally conserved members of the Ras superfamily of regulatory GTP-binding proteins. ARFs influence vesicle trafficking and signal transduction in eukaryotic cells. ARF-dependent regulatory mechanisms include the coordination of spectrin interactions with golgi membranes and the association of actin to the golgi via rho family-dependent G-protein localization (Rac, CDC42) and WASP/Arp2/3 complexes. Additionally, ARFs play a central role in maintenance of organelle integrity, assembly of coat proteins, and activation of phospho-lipase D. The ARF proteins are categorized as class I (ARF1, ARF2, and ARF3), class II (ARF4 and ARF5) and class III (ARF6); members of each class share a common gene organization.

ARF5 Polyclonal Antibody - Additional Information**Gene ID** 381**Other Names**

ADP-ribosylation factor 5, ARF5

Dilution

WB~~1:1000<br \>IHC-P~~N/A<br \>IHC-F~~N/A<br \>IF~~1:50~200<br \>ICC~~N/A<br \>E~~N/A

Format

0.01M TBS(pH7.4), 0.09% (W/V) sodium azide and 50% Glyce

Storage

Store at -20 °C for one year. Avoid repeated freeze/thaw cycles. When reconstituted in sterile pH 7.4 0.01M PBS or diluent of antibody the antibody is stable for at least two weeks at 2-4 °C.

ARF5 Polyclonal Antibody - Protein Information

Name ARF5

Function

GTP-binding protein involved in protein trafficking; may modulate vesicle budding and uncoating within the Golgi apparatus.

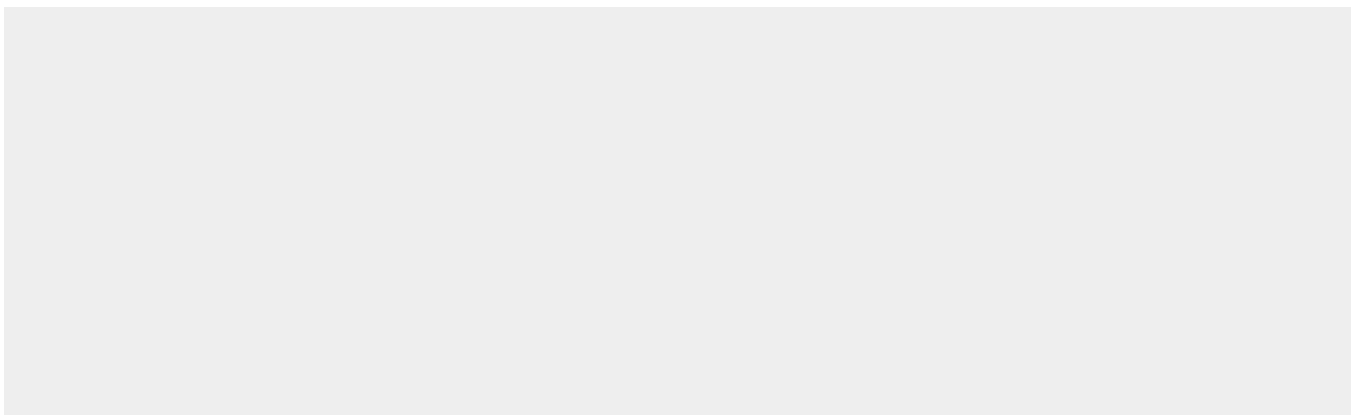
Cellular Location

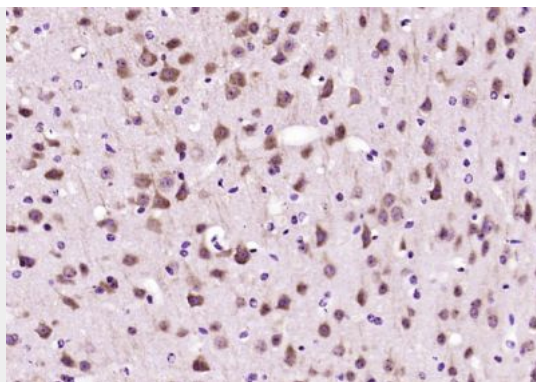
Golgi apparatus. Cytoplasm, perinuclear region. Membrane; Lipid-anchor. Golgi apparatus, trans-Golgi network membrane {ECO:0000250|UniProtKB:P84084}; Lipid-anchor {ECO:0000250|UniProtKB:P84084}

ARF5 Polyclonal Antibody - Protocols

Provided below are standard protocols that you may find useful for product applications.

- [Western Blot](#)
- [Blocking Peptides](#)
- [Dot Blot](#)
- [Immunohistochemistry](#)
- [Immunofluorescence](#)
- [Immunoprecipitation](#)
- [Flow Cytometry](#)
- [Cell Culture](#)

ARF5 Polyclonal Antibody - Images



Paraformaldehyde-fixed, paraffin embedded (mouse brain); Antigen retrieval by boiling in sodium citrate buffer (pH6.0) for 15min; Block endogenous peroxidase by 3% hydrogen peroxide for 20 minutes; Blocking buffer (normal goat serum) at 37°C for 30min; Antibody incubation with (ARF5) Polyclonal Antibody, Unconjugated (bs-12511R) at 1:200 overnight at 4°C, followed by operating according to SP Kit(Rabbit) (sp-0023) instructions and DAB staining.